



HARTLEY BROTHERS INC.

Quality Construction Since 1980

THE MELBOURNE

3-4 BEDROOM | 2 BATH | 1,763 SQ FT



ELEVATION 1 - STANDARD OPTION

Whether you're looking to build a home on your land or looking for a new community to build in, you can count on Hartley Brothers to deliver quality, style and value.

Customize your home with features such as:

FORMICA, GRANITE OR QUARTZ COUNTERTOPS • CARPET, VINYL PLANK, TILE OR WOOD FLOORING
DECORATIVE TRIM PACKAGES • CASED WINDOWS • FREESTANDING SPA TUBS • WALK IN TILE SHOWERS
PREMIUM PLUMBING UPGRADES • PREMIUM HARDWOOD CABINETS • BUILT-IN DROP ZONES
STONE OR BRICK ACCENTS • ENERGY EFFICIENT CONSTRUCTION • AND SO MUCH MORE!

CALL (352)332-3912 TODAY TO START BUILDING YOUR DREAM HOME!

OR EMAIL US AT SALES@HARTLEYBROTHERS.COM

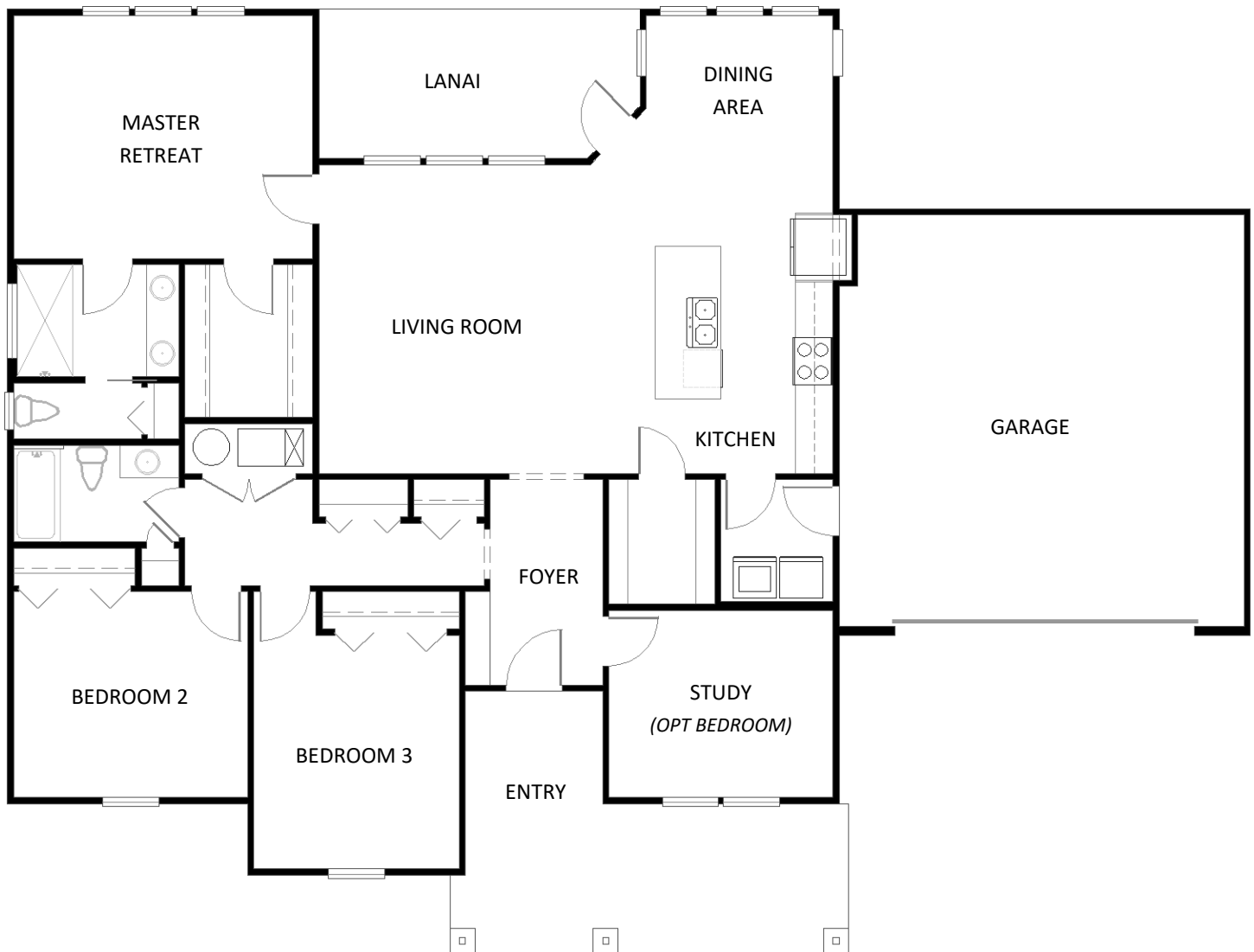


THE MELBOURNE

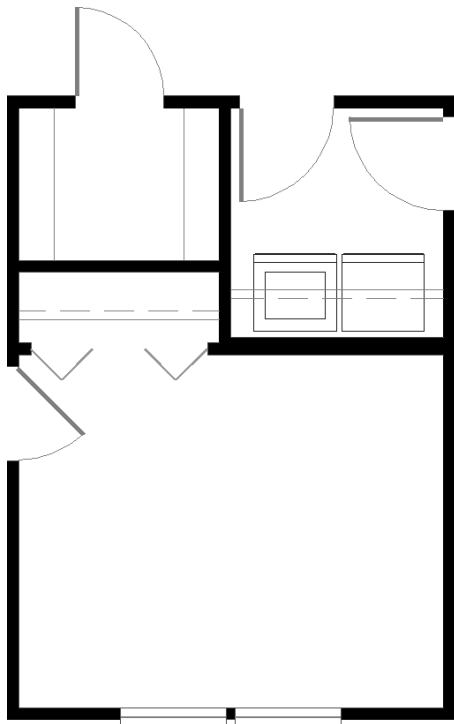
Width: 66'6"

Depth: 50'6"

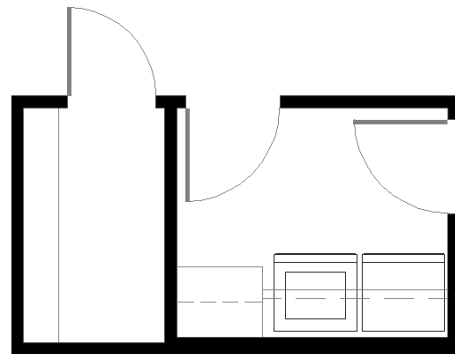
1,763 SQ FT	INTERIOR LIVING
498 SQ FT	GARAGE
345 SQ FT	OUTDOOR LIVING
2,606 SQ FT	TOTAL



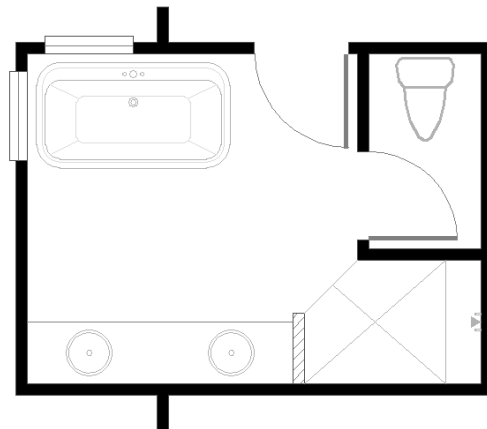
FLOORPLAN OPTIONS



*OPTIONAL
4TH BEDROOM*



*OPTIONAL
LAUNDRY SINK*



*OPTIONAL
MASTER BATH*

