



HARTLEY BROTHERS INC.

Quality Construction Since 1980

THE GRENADA

3 BEDROOM | 2 BATH | 1,520 SQ FT



*Whether you're looking to build a home on your land or looking for a new community to build in,
you can count on Hartley Brothers to deliver quality, style and value.*

Customize your home with features such as:

FORMICA, GRANITE OR QUARTZ COUNTERTOPS • CARPET, VINYL PLANK, TILE OR WOOD FLOORING
DECORATIVE TRIM PACKAGES • CASED WINDOWS • FREESTANDING SPA TUBS • WALK IN TILE SHOWERS
PREMIUM PLUMBING UPGRADES • PREMIUM HARDWOOD CABINETS • BUILT-IN DROP ZONES • SMART HOME TECHNOLOGY
STONE OR BRICK ACCENTS • ENERGY EFFICIENT CONSTRUCTION • UNIVERSAL DESIGNS • AND SO MUCH MORE!

CALL (352)332-3912 TODAY TO START BUILDING YOUR DREAM HOME!

OR EMAIL US AT SALES@HARTLEYBROTHERS.COM

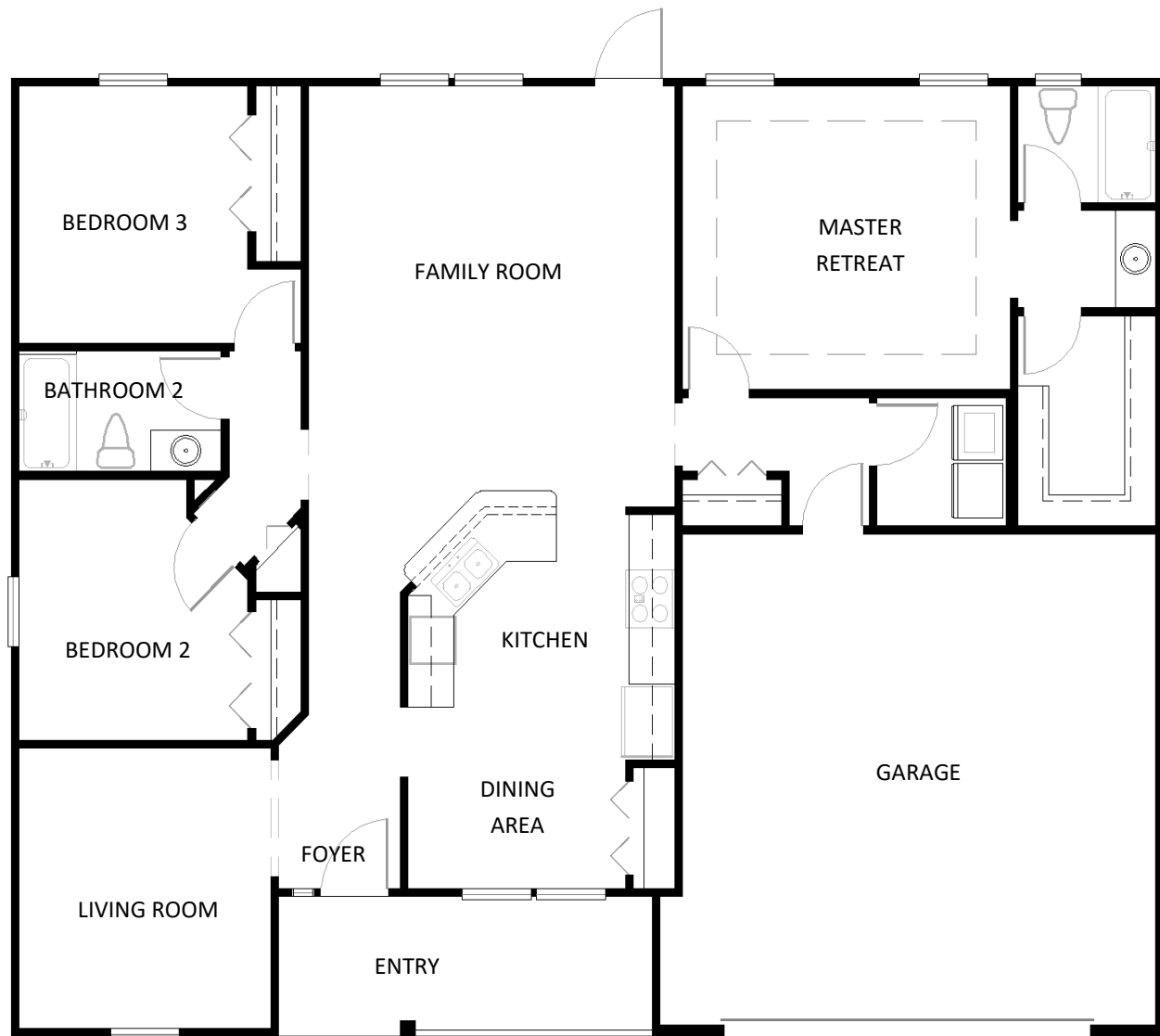


THE GRENADA

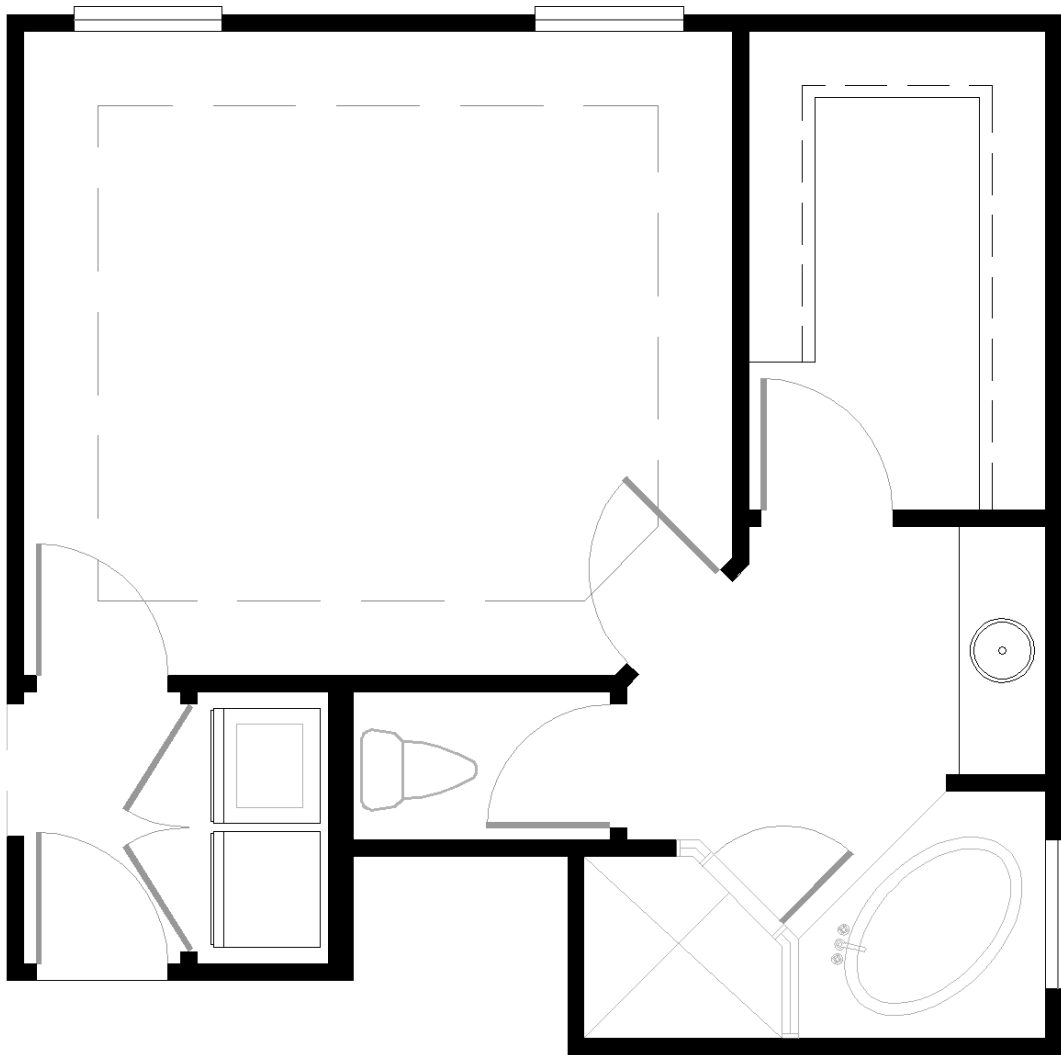
Width: 37'10"

Depth: 42'8"

1,520 SQ FT	INTERIOR LIVING
460 SQ FT	GARAGE
40 SQ FT	OUTDOOR LIVING
2,837 SQ FT	TOTAL



FLOORPLAN OPTIONS



*OPTIONAL
MASTER*

